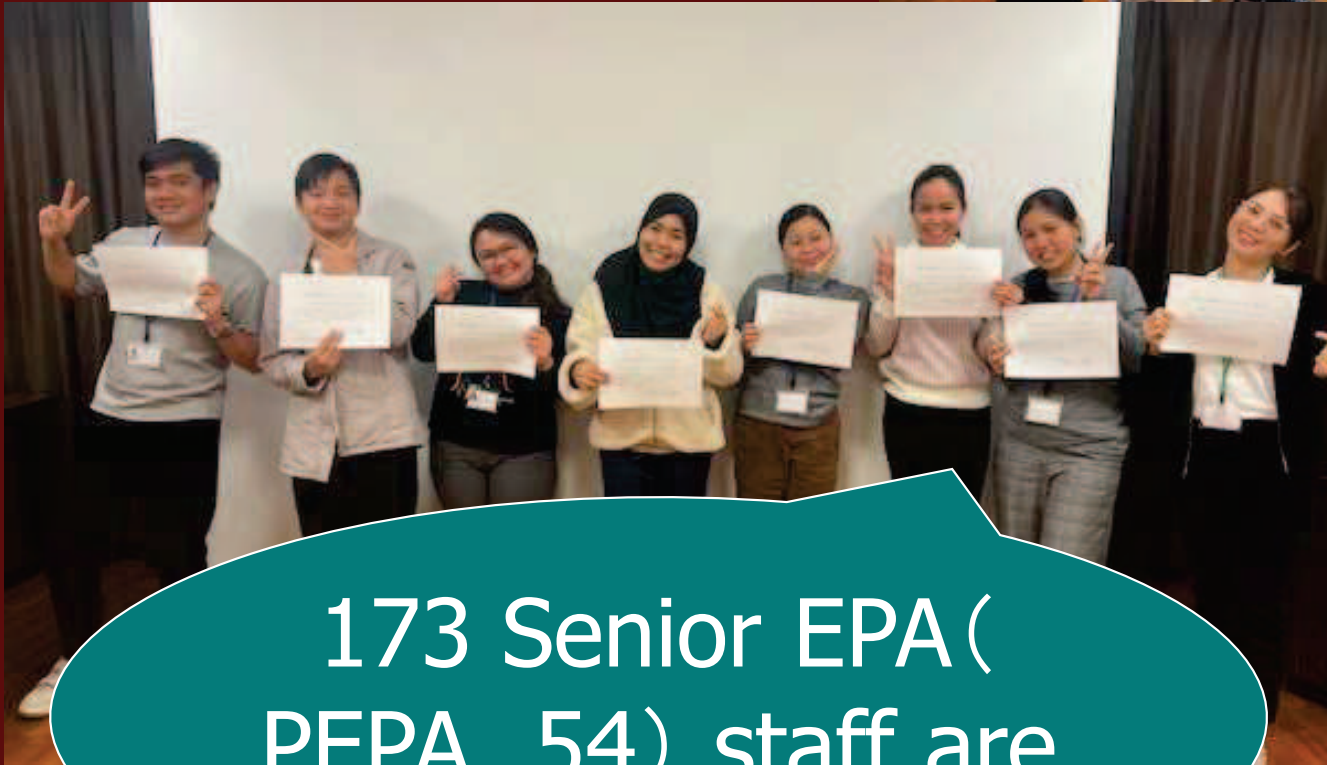


# Welcome to Sun Vision !



173 Senior EPA(  
PEPA 54) staff are  
waiting for you!

22 PEPA Licenced  
Care Worker  
(Kaigo-Fukushishi)

Pass rate of national  
exam 80%

# SHIMOSUWA Town, NAGANO Prefecture

## Graceful Shimosuwa

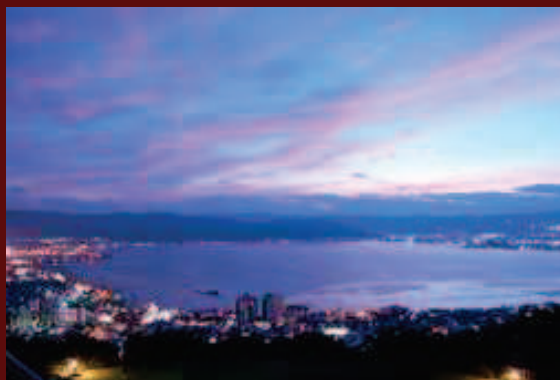
2 more candidates

**7000212**

1 for Nursing Home

**7000215**

1 for Health Care  
Facility for the Elderly



Lake Suwa



12 senior PEPA are  
working here.



# KAKAMIGAHARA City, GIFU Prefecture

**7000214**

## Nursing Home **Joyful** **Kakamigahara**

2 more candidates



8 senior PEPA are  
working here.

Inuyama Castle. 15 minutes by  
bike!



10 minutes bike trip to big  
shopping mall, super markets

# KONAN City, AICHI Prefecture

**7000213**

## Nursing Home, **Joyful Konan**

2 more candidates



3 senior PEPA are  
working here.



10 minutes bike trip to big  
shopping mall

10 minutes bike trip from  
dormitory to this nursing home



# KASUGAI City, AICHI Prefecture

**7000211**

Health Care Facility for the Elderly

## Graceful Kasugai

2 more candidates



1 senior PEPA are working here.



10 minutes bike trip to big shopping mall



# Working Conditions

## Annual wage

3,180,600 JPY  
(without night shift)

3,600,600 JPY (with night shift)

## Wage condition

Basic wage ¥173,000 /m and other allowances as well as biannual bonuses

**Allowances**: Government subsidized Caregivers' Allowance ¥48,000/m, Night shift allowance ¥7,000/shift (average 5 night shifts/m), Uniform ¥800/m

**Bonuses**: 3 months of monthly basic wage/year in average payment

## Meals

Free dinner is available at working site for first 1 year. Lunch is provided at ¥335



# Support for Japanese learning and National exam



# Support for Japanese leaning and National exam

- Monthly 19-22 hours for learning out of duty hours.
- Japanese language lesson for 3-4 EPA staff, 2 hours per week by professional Japanese language teacher
- Lesson for national exam, 3 to 6 hours per month by professional lecturer
- Free textbooks



# Sun Vision Group

- **No Lifting Policy** is one of the most important visions and prevailed throughout the organization.



- **Safety of staff is the key for our services.**

# Sun Vision Group

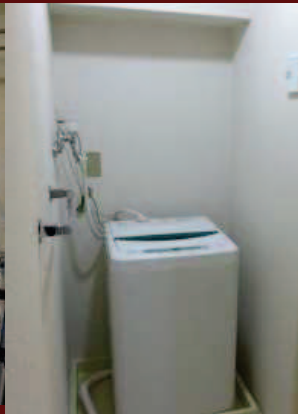
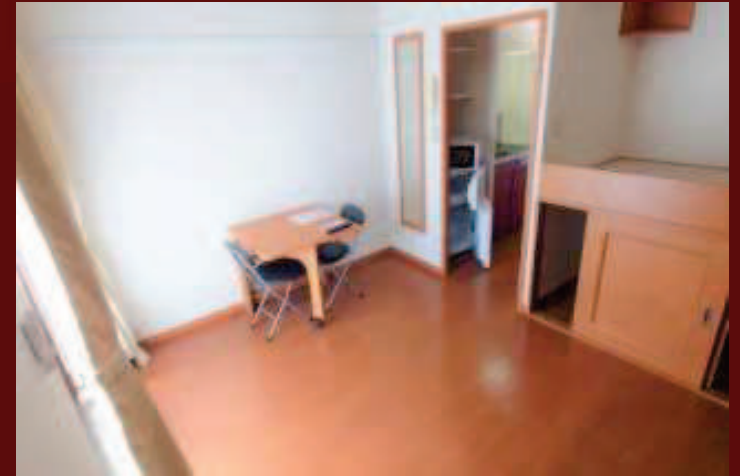
- IT technology for recording progress notes, “Care Carte” system



- You don't have to make notes in handwriting anymore.

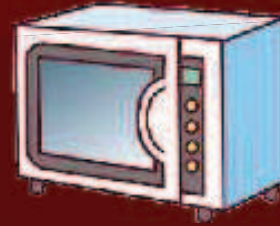


# Residence





# Residence



House electric goods,  
bicycle, table & chairs  
are lent with free of  
charge. Japanese  
bedding is provided



For more information, please  
contact us.

■ E-mail: [s-yamamoto@sun-vision.or.jp](mailto:s-yamamoto@sun-vision.or.jp)

■ Facebook:  
<https://www.facebook.com/sunlife.sunvision>

■ URL: <https://sun-vision.or.jp/news>

